

Revelation / Alkaline water ionizer



REVELATION

Alkaline Water Ionizer

User's Manual

USF-T9



- Make sure to carefully read this user's manual before using your new REVELATION Water Ionizer.
- This product is intended only for residential use.

Congratulations on purchasing the REVELATION Undersink Water Ionizer!

Dear Customer,

We sincerely appreciate your purchase of the REVELATION Undersink Water Ionizer. This machine is considered a ***medical substance producer*** by the Korean FDA because of the many health benefits it provides. We wish you many years of improved health and enjoyment while using your REVELATION.

Before operating the ionizer, it is important that you ***read this user's manual carefully***. It contains directions for proper installation and operation of your ionizer. The benefits you receive from the water will be enhanced by proper use and maintenance of the machine. Because it is a medical substance producer, please ***make sure that you are drinking water at a pH level that is appropriate for you***. If you have serious existing health conditions, we recommend that you consult with your doctor before use.

We assume no responsibility for accidents that occur due to improper use of the REVELATION, so be sure to read this user's manual.

All employees of Water for Life USA are knowledgeable about the machine and care about your experience. We respect your opinion and your needs and will always strive to assist you with excellent customer service. If you have any questions or concerns, you can contact us through our website, www.waterforlifeusa.com, or call our main office (1-877-255-3713). We hope that this is the beginning of a long and satisfying relationship and you'll feel confident in referring our company and product to your family and friends.

Thank you,
The entire staff at Water for Life USA

Table of Contents

REVELATION Thank You 2

Table of Contents 3

The REVELATION: A Remarkable Machine 4

REVELATION Product Features 5

Safety Precautions 8

Product Description 14

Touch Button Directions 16

Installation Instructions 18

Programming the REVELATION 26

How to Change the Filters30

Water Problems and Solutions 32

How to Use Alkaline Water 36

How to Use Acidic Water 37

How to Drink Alkaline Water from the REVELATION 38

REVELATION Troubleshooting 39

List of REVELATION Auto-Diagnosis Errors 41

Product Specifications 42

Product Warranty 43

The REVELATION: A Remarkable Machine

Your REVELATION Water Ionizer has the ability to turn ordinary tap water into water with the ability to effectively counter the three most probable causes of sickness, chronic disease and premature aging (1) high acidity levels in the body, technically called acidosis, (2) damaging runaway free radical activity, and (3) body dehydration.

High body acidity is caused primarily by the foods we eat and the beverages we drink. Ideally our diet should be 80% alkaline and 20% acidic. In reality, the American diet is just the opposite. Highly acidic foods include animal protein, grain products, dairy products, most beans, fats and oils and even some fruits and vegetables.

High acidity beverages include alcohol, soft drinks, most sports and energy drinks, reverse osmosis water (most bottled water is R/O water), and coffee. As you can see, it is very difficult to consistently eat an alkaline diet.

When body pH is lowered (towards acidic), ALL major bodily functions are negatively affected. High acid intake results in the creation of excess acidic waste. To protect the kidneys and liver, (our chief detoxification organs) from acidic overload, the body stores excess acidic waste in fat cells. In a continually acidic internal environment, these fat cells continue to accumulate, resulting in gradual and consistent weight gain. The blood must remain at a very precise alkaline pH of 7.365. Should blood pH drop to pH 7.0, we would go into a coma and die. To buffer blood pH, the body steals minerals from bones -- a direct cause of osteoporosis. High acidity levels in the body also hinder the body's ability to circulate blood, raising blood pressure. Alkaline ionized water at pH levels between 8.5 and 9.5 is VERY effective at neutralizing body acidity, helping to return the body toward an alkaline state. It is a significant fact that disease will easily germinate and flourish in an acidic environment whereas it literally CANNOT SURVIVE in an alkaline environment.

Free radicals are molecules that are missing an electron and are therefore chemically unstable. To become stable, a compelling chemical urge, a free radical must find an electron – somewhere. Free radicals can and will attack and steal electrons from healthy cells, damaging them, killing them, or altering their DNA. Free radical damage has been directly linked to cancer. A substance that contains easily accessible or free electrons that can be used as an alternate source of electrons by free radicals is called an antioxidant. Alkaline ionized water contains huge numbers of OH negative ions, molecules that have an extra electron, making alkaline ionized water a VERY POWERFUL antioxidant. As a side benefit, the interaction between OH negative ions and free radicals produces oxygen, providing the body with LOTS of NATURAL energy!

Alkaline ionized water is restructured, making it up to six times more hydrating than ordinary water. Smaller water clusters more effectively penetrate cells, resulting in much more efficient delivery of nutrients and oxygen to cells and removal of waste material and toxins from cells.

Alkaline ionized water actually enables the body to heal itself and to keep itself healthy and free of sickness and disease – just what it was designed to do. Alkaline ionized water is very similar in nature to the famous miracle water of Lourdes, France, considered by many to be the fountain of youth.

REVELATION Product Features

The REVELATION offers a combination of EOS's highly advanced technology, elegant design, and advanced computer system, providing ease of operation and excellent performance.



■ 9 Platinum and Titanium Plates

Manufactured by the top metal producer of Japan, EOS platinum and titanium plates are of the highest quality and produce abundant hydrogen for maximum health benefits. The plates come with a lifetime warranty.

■ Turbo Function

The TURBO Function allows users to create the strongest alkaline and acid water simultaneously with just the push of a button. Perfect for cooking, cleaning, sterilizing and disinfecting.



■ Computer Controlled Electrolysis System

The REVELATION calculates the water flow and quality of the source water and automatically adjusts ionization to create the best ionized water.



■ One-touch Automatic Water Flow Control

Just press the water “on” button to release water through the REVELATION, then press it again to stop the water flow.



■ Voice Announcements

The REVELATION announces the ionization level, self-cleaning process, and many other important functions.



■ Filter Replacement Microflow Sensor System

The Microflow sensors inside the REVELATION filters communicate with the REVELATION so that it can accurately tell you when to change your filters.



■ Modern and Elegant Design

The REVELATIONS's design will fit into any kitchen, adding style and sophistication.



■ LCD Screen Color Back Light

A multi-colored back light enhances the LCD display, showing you the color of the alkaline and acid water setting that you choose.



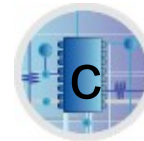
■ Electrolytic Antibacterial System

The process of electrolysis inhibits micro-organisms from multiplying and automatically cleans the system.



■ Advanced Filtration

The four-filter activated carbon system inside the REVELATION will remove 99.99% of most contaminants from your source water, making it safe, fresh and healthy to drink!



■ SMPS Power Supply

SMPS (switch mode power supply) provides extremely stable power, eliminating energy loss and shortened lifespan as is typical with older technology such as transformer-based power supply systems.

Other REVELATION Features:

4 high capacity filters: 4 filters have long lifespans, cutting down on the cost per gallon. It is recommended that these filters be replaced once a year with average use, or when the filter life remaining reaches 70 liters – whichever comes first.

10 preset pH levels: Five alkaline water settings (8.5pH, 9.0pH, 9.5pH, 10.0pH and 11.0pH:Turbo function), one pure water setting (filtered only), and four acidic water settings (6.0pH, 5.0pH, 4.0pH and 3.0pH) all with a convenient button selection system.

76 programmable pH and ORP levels: The REVELATION enables you to program nearly any pH and ORP combination for the pH level that's right for you. This feature is essential due to the wide range of tap water quality in North America. Non-programmable ionizers cannot adjust to local tap water conditions, so these ionizers are at the mercy of your tap water and a handful of pre-set pH levels. The actual pH levels of non-programmable ionizers can vary greatly from the pH levels posted on the control panel of the unit. Simply put, when used in two different cities, a non-programmable ionizer will typically get two completely different pH level outputs when kept at the same pH setting.

Complete auto-diagnosis system: The REVELATION continuously monitors all internal operating systems, ensuring that you are immediately notified in the unlikely event of a problem.

Automatic cleaning system: The REVELATION monitors plates for contamination levels and initiates cleaning cycles automatically when needed.

Automatic draining system: Drains water into the electrolysis cell system and filter to enhance full system cleaning and greatly extends the lifespan of the machine.

Automatic pH and ORP control: The REVELATION controls the pH and ORP of your water by adjusting the ionization according to the mineral content of your tap water. This allows the ionizer to estimate and display the pH and ORP of your water.

Stainless steel adapters: Unlike the plastic adapters which are used in other systems and are prone to problematic leaks and the subsequent need for replacement, the REVELATION comes equipped with stainless steel attachments for your faucet or cold water line.

Contemporary design: The REVELATION's sleek and modern design easily fits in with your home décor.



Safety Precautions Prior to Use:

When you begin drinking alkaline water, start with alkaline water level one for the first week. Alkaline water helps your body to detoxify, which could cause possible tiredness, mild nausea, etc. If no negative symptoms occur, then progress to alkaline water level two for the next week. Then you can drink alkaline water level three, which is the final step. **Warning: Don't drink alkaline water level four. It's only for cooking and for use as a detergent!**




Because of unknown possible interactions, don't take your prescription medication with alkaline water. Use the filtered only water function on the REVELATION instead.

If you suffer from achlorhydria, you shouldn't drink alkaline water. Achlorhydria refers to an abnormal deficiency of free hydrochloric acid in gastric juice, often associated with severe anemias and cancer of the stomach.

If you have a chronic disease, suffer from liver or bowel problems, or you are taking prescription medications, don't drink alkaline water prior to consulting your physician.

The REVELATION is designed to operate with tap water. If you have well water, please consult Water for Life USA for our recommendations for prefilters to treat conditions in your well water such as lack of minerals, too much hardness, too many heavy metals, etc.

These safety precautions are provided to help you avoid potential problems with your REVELATION. Please read them carefully so that you can use your REVELATION safely. For the purposes of this manual, we have graded the severity of the safety threat with three color-coded warning signs.

	The red warning sign means “danger” and indicates a severe safety threat that represents an imminent hazard that could result in injury or death.
	The orange warning sign indicates a potential hazard that could result in moderate injury or damage to property.
	The yellow warning sign means “attention” and indicates a potential hazard that could result in minor injury to the body or damage to property.

Power Supply Precautions:

*This ionizer must be connected ONLY to a 110 Volt power source. A higher voltage supply will damage the unit. Please check your voltage before connecting the unit. (Machines using 220 Volts are available for international shipping and use, but must be special ordered by an authorized dealer or direct from Water for Life USA.)



Do not use a damaged power cord or loose connector. Shock or fire may occur.



Don't touch the power cord with wet hands. Shock or fire may occur.



Do not forcibly bend the power cord and make sure no objects are sitting on top of it.

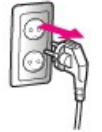




If water gets on cord or outlet, make sure they are completely dry prior to use.



During product inspection or parts replacement, unplug the power cord.



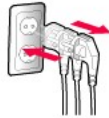
Use a dedicated power outlet for this machine.



Do not separate, sever, or splice the power cord. Electrical shock or fire may occur.



Do not plug and unplug the power cord repeatedly. Electrical shock or fire may occur.



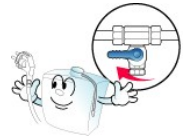
If the electrical plug or cord is damaged, contact us. Do not attempt to replace it.



Safety Precautions During Use:



If you aren't going to use your REVELATION for a long period of time, be sure to unplug it and disconnect it from your tap. Otherwise, leaks or electrical shock may occur.



Do not place anything on top of the REVELATION, especially if it holds liquid. Spilling liquid on the REVELATION could result in electrical shock or fire.



If the REVELATION makes abnormal noises or if you see smoke rising from it, disconnect it immediately and consult a Water for Life USA warranty specialist.



If you notice a leak from anywhere on the body of your REVELATION, disconnect it immediately, unplug it, and contact a Water for Life USA warranty specialist.



Be sure to change your filters as indicated by the filter life displayed on the screen, or every year, whichever comes first.



Don't poke or scratch the screen with a sharp object, this may cause an electrical shock or damage the screen.




If you mainly use alkaline water, occasionally set your REVELATION to its acid water settings and run some water. This helps the REVELATION stay properly calibrated.




During hot and humid weather, it is normal for some condensed water to drip from the stainless steel hose. However, this is not normal during cold weather and is indicative of a leak.




Cleaning:

-  **Disconnect the power cord prior to cleaning. Do not clean with paint thinner or benzene.**



-  **Do not spray water directly on the power inlet.**




-  **Do not spray water directly onto the REVELATION. Instead, use a damp cloth.**




Other Safety Precautions:

-  **If you need to move the REVELATION, do not drag it by the power cord as this will damage the unit.**




-  **Don't ever open up the REVELATION and attempt to disassemble or repair it yourself. Doing so will void your warranty. Contact a Water for Life USA warranty specialist.**



-  **Use only filtered water in a fish tank. Alkaline water may kill your fish.**



Installation Safety Precautions:

-  **Do not install the REVELATION near heat appliances or directly in the sun, or in excessively humid areas like a bathroom.**



-  **Do not install the REVELATION on an uneven surface.**



-  **Do not use hot water with the REVELATION. CONNECT TO COLD WATER LINE ONLY**



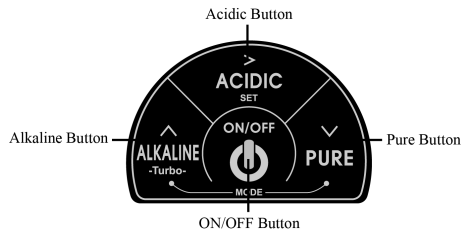
Other Installation Safety Tips:

- * Do not attempt to repair or take apart the machine.
- * Keep the electrical plug free from dust and dirt.
- * Do not place any objects, food or beverage on the product.

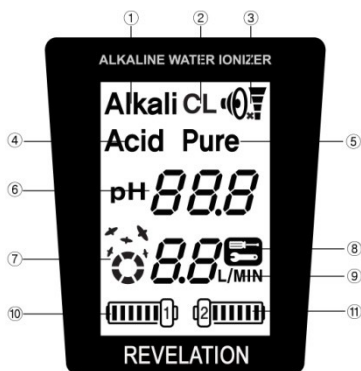
Faucet



Touch Button



Display LCD



- ① Alkaline Water indication
- ② Cleaning Indication
- ③ Volume Control
- ④ Acidic Water indication
- ⑤ Purified Water Indication
- ⑥ Current pH Indication
- ⑦ Ionization Indication
- ⑧ Check for Problem
- ⑨ Water Flow in Liters Per Minute
- ⑩ Filter Two Filter Life
- ⑪ Filter Two Filter Life

General Body



- ① SEDIMENT FILTER
- ② PRE CARBON FILTER
- ③ CERAMIC FILTER
- ④ POST CARBON FILTER

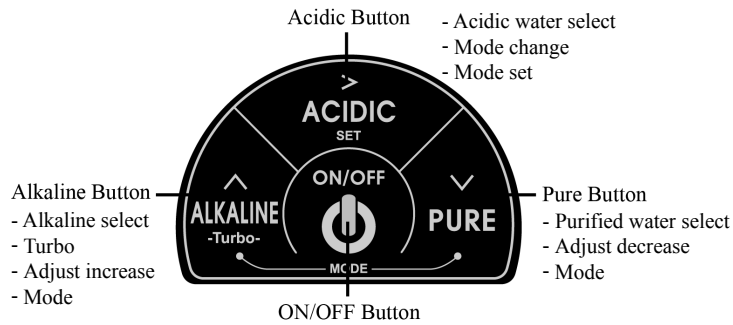


3,000L



6,000L

Touch Button



Alkaline Water Selection Button Levels One Through Four:

Touch these sensors to produce alkaline water (water with a pH greater than 7.0). Continue touching the sensor to increase or decrease the pH level of alkaline water to be produced.

If the voice prompt is turned on, it will announce to you what level of alkaline water is being produced. There are four preset alkaline water levels or steps: first step = pH 8.5, second step = pH 9.0, third step = pH 9.5 and fourth step = pH 10.0.

This button is also used to increase levels you are adjusting in the Mode.



Turbo Function:

Press the alkaline water button for three seconds to enter into the Turbo mode. 11 pH will be displayed.

The turbo function allows users to create the strongest alkaline and acidic water simultaneously, which should be used for cooking, cleaning, sterilizing and disinfecting.



Acid Water Selection Button Levels One Through Four:

Touch this sensor to produce acid water (water with a pH less than 7.0). Continue touching the sensor to increase or decrease the pH level of acid water being produced.

The selected water is delivered through the stainless steel hose on the top of the REVELATION. If the voice prompt is turned on, a message will also let you know what level of acid water is being produced. There are four preset acid water levels or steps: first step = pH 6.0, second step = pH 5.0, third step = pH 4.0 and fourth step = pH 3.0.

The next time you use your product it will have automatically switched back to alkaline water for safety reasons. Do not drink acid water. You can also use this button to lower settings in the Mode.

This button is also used to SET what you are adjusting in the Mode.

Filtered Only Water Selection Button:

Touch the purification button(PURE), followed by the on/off button to get filtered only water. No ionization is performed. The pH of the water will be the same as the pH of the supplied water (tap water). You can also use this button to increase settings in the mode.

Water On/Off Button:

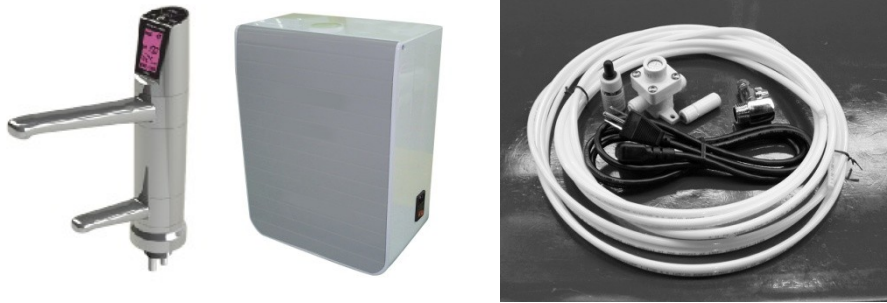
Switches the REVELATION from production mode to off/standby mode. Touch this sensor to start producing water. The REVELATION will automatically start producing water at the selected alkaline level. When power switch is first turned on and you first touch this sensor, the REVELATION will enter into a self cleaning cycle for about 30 seconds. Let this cycle run its course, then discard this water.

When you touch the alkaline water sensor plus the pure water sensor simultaneously for five seconds, you will enter into the REVELATION Mode. This Mode is for changing the REVELATION Setup.

See "Programming the REVELATION."

Unpacking Your REVELATION:

Inside the REVELATION Box



- REVELATION General body / REVELATION Faucet
- Hardware box containing installation parts and accessories
- REVELATION user's manual
- pH drops
- Dust Filter
- Water Pressure Reducing Valve
- Power Cord
- Cold Water Line Diverter valve
- 1/4" white water tubing- to be cut to desired length during installation.
- 5/16" white water tubing- to be cut to desired length during installation.

Installation Tips:

- Be sure to only supply clean quality water to the REVELATION.
- Do not hook it up directly to a well, lake, river, etc. without consulting your authorized dealer.
- Do not supply the unit with ionized water.
- Do not use well water, groundwater, contaminated water, and water contained with high amounts of heavy metals before speaking to your authorized dealer.
- Do not dispense contaminated water to this product. Tap water is best.
- Remember to test your water once per month for pH using the supplied pH test drops.

Installing Your REVELATION

Let's get started!

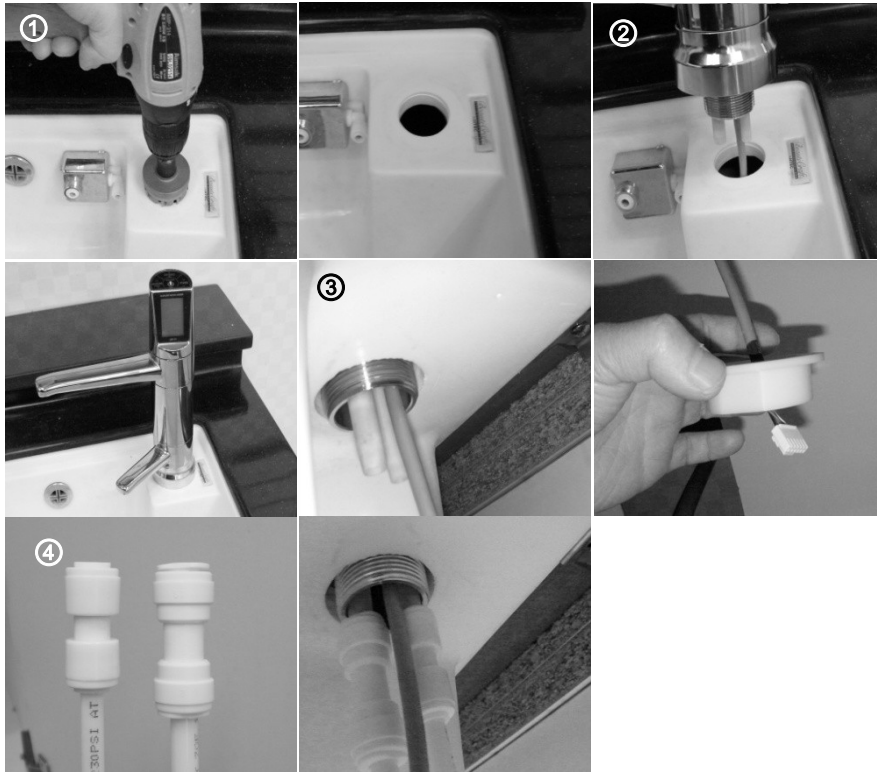
- 1) Please examine the REVELATION box and contents to insure your new REVELATION was not damaged during shipping. Please contact your authorized dealer or Water for Life USA immediately if damage has occurred.
- 2) Remove your REVELATION, lay it on its back and remove the clear cover (sealed at the bottom of your machine).
- 3) Open the hardware box where you will find your cold water line diverter valve, power cord, 1/4 inch line, water pressure reducer valve for high water pressure areas (usually cities), and pH drops for testing your water after installation has been completed. Please refer to the color chart in this manual when you are testing your alkaline/purified/acidic water.



- 4) Now, we need to remove the plugs from under the REVELATION, inserted in the quick connect valves. These plugs are very similar to golf tees or an umbrella with a flat top. These tees prevent water from leaking from your new REVELATION. Why is there water? All of our products have been tested for quality control.

Below the cap of the plug on the quick connect valve is a small, barely visible white ring. Place your thumb and index fingers below the cap then press with the tip of your thumb and index finger toward the quick connect valve, pushing in on the small ring to release the plug, while at the same time gently pulling the plug out.

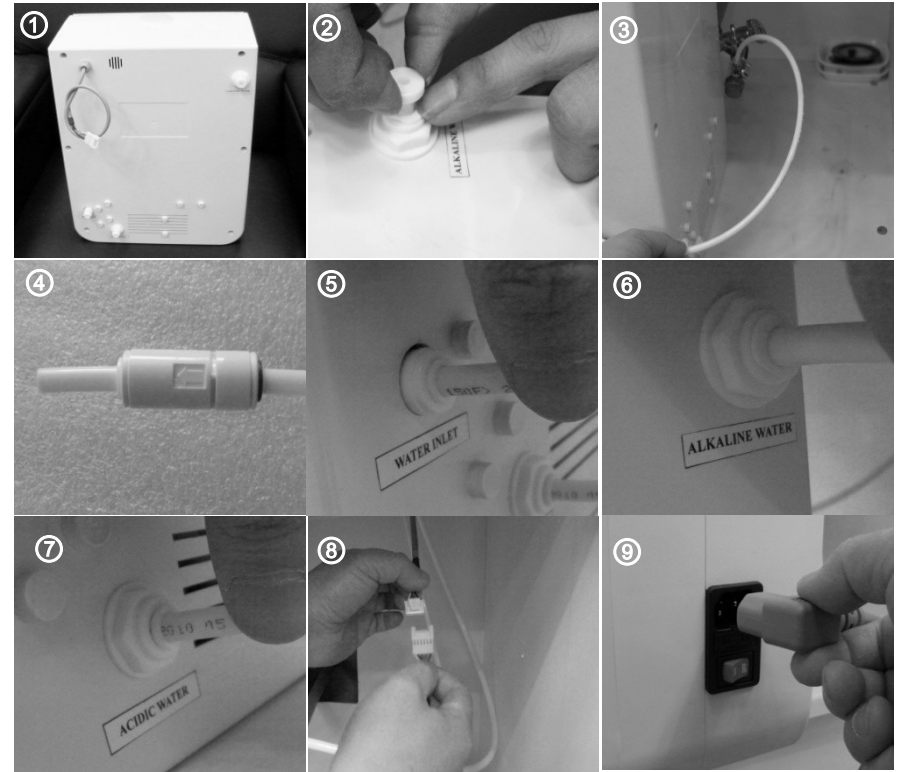
Installing the Revelation Faucet:



*** Please watch the REVELATION installation video at: <http://waterforlifeusa.com/products/> then click on "REVELATION". The video is at the bottom of the page. ***

1. The first step is to drill a 1 ¼ inch hole in your countertop. Some sinks already have this utility hole. There may be a sprayer or a soap dispenser attached to it. If so, you can use this utility hole instead of drilling and you can skip this step. However, if you don't have this utility hole, the first step in installation is to drill a 1 ¼ inch hole in your countertop.

Installing the Revelation Base:



You will need at least an 18 volt drill with a 1 ¼ inch ingrader arbor attached to a 1 ¼ inch carbide saw. Attach the ingrader arbor to the drill and tighten, then attach the carbide saw to the ingrader arbor.

Next, select a location for the hole, not too far away from your sink and then drill the hole.

2. Next, unscrew the stainless steel clamp from the REVELATION faucet. You will see exposed rivets. Now insert the REVELATION faucet into the drilled hole.

Revelation Faucet Installation Continued

3. The REVELATION communication cable, input tube and output tube will dangle through the hole.
4. Next attach the ¼ inch and 3/8 inch unions to these tubes. Once the unions are installed, screw the REVELATION clamp to the faucet and tighten. The REVELATION faucet is now installed.

Installing the REVELATION Base:

1. Place the REVELATION body on the floor of your cabinet with the back facing you.
2. Remove the plugs from the REVELATION water inlets and outlets. Use your thumb and index finger to pinch between the cap of the plug and the ring on the adapter, simultaneously pushing the ring in toward the body while gently pulling out the plug.
3. Next, install the cold water line diverter valve to the cold water line. The cold water spigot is on the right (hot water is on the left). You first need to turn off the water supply by turning the spigot handle all the way to the right. Once the water is turned off, now you need to unscrew the ½ inch hose that is attached to the spigot. You may need pliers if you can't unscrew it by hand.

Note: If you have copper pipes, the provided cold water line diverter valve will not fit. You will need to purchase a copper pipe diverter valve from your hardware store.

Note: Some hoses attached to the cold water line spigot are 3/8 inch and not ½ inch. If this is the case, please contact your authorized dealer and ask them to ship you a 3/8 inch cold water line diverter valve.

Once you have unscrewed the hose attached to your cold water line spigot, install the cold water line diverter valve inbetween the hose and the spigot, noting that the female end of the diverter valve attaches to the spigot while the cold water line hose attaches to the male end of the diverter valve. Finally, adjust the water flow control lever on your cold water line diverter valve to about the midway position.

Revelation Base Installation Continued

Now that the cold water line diverter valve is installed, you can connect the ¼ inch REVELATION tubing. Unscrew the ¼ inch tubing cap from the cold water line diverter valve. Push the ¼ inch tubing onto the exposed knob, then screw the tubing cap back onto the cold water line diverter valve in order to securely attach the ¼ inch tubing to the cold water line diverter valve.

Now run the ¼ inch tube to the REVELATION base and cut the tube to the length that you need to go between the cold water line diverter valve and the base, allowing enough slack for the base to be able turn all the way around (for when you need to replace filters).

4. Attach the dust filter to the ¼ inch tube. Simply attach the IN of the dust filter to the end of the cut ¼ inch tube, then cut a small length (about three inches) of ¼ inch tubing to attach to the OUT of the dust filter, as indicated by the water flow directional arrow on the dust filter.
5. Press the tubing attached to the OUT of the dust filter into the WATER INLET on the back of the REVELATION base.
6. Attach the 3/8 inch REVELATION tube into the ALKALINE WATER INLET on the base. Run this tube to the 3/8 inch union attached to the REVELATION faucet, then cut to the desired length. Be sure to leave enough slack to be able to maneuver the REVELATION base during filter changes.
7. Next, attach the remaining ¼ inch REVELATION tube into the ACIDIC WATER INLET. Run this tube to the ¼ inch union attached to the REVELATION faucet, then cut to the desired length. Be sure to leave enough slack to be able to maneuver the REVELATION base during filter changes.
8. Next, attach the REVELATION base communication cable to the REVELATION faucet communication cable.
9. Plug in the REVELATION base to a 110v power outlet.

How to use your REVELATION:

1) Turn the water on from your cold water line. Adjust the water flow with your cold water line diverter valve water flow control handle. The halfway position is ideal.



2) Press the water “on” button on the front of the REVELATION. The first time you use your REVELATION, it will run a cleaning cycle. The screen will turn red and chimes will sound for about thirty seconds. Afterwards, the water will automatically shut off.

3) While the cleaning cycle is running, look at the screen and locate the water flow in liters per minute. Verify that the water flow is between 2.0 and 2.5 liters per minute. If it isn't, then adjust the flow rate with your cold water line diverter valve water flow control handle.

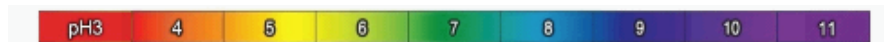
If there is too much water pressure on the REVELATION, no water will be released through the machine until you turn it down. Also, if there is not enough water pressure (less than one liter per minute), the REVELATION will be unable to ionize the water.

4) Next, choose the alkaline or acid water level that you want and press the water “on” button. To turn the water off, press the water “off” button. Do not turn the water off with your diverter valve while the REVELATION is on. If you do, you will see an error message called “check” and the icon of the wrench will blink, telling you that your REVELATION is waiting for water to ionize, but you have shut off the water that it needs. So, again, be sure that you turn the water on and off with the water “on” and “off” button on the front of the REVELATION.



5) Next, test the pH of your REVELATION. Set the REVELATION to alkaline water level four and collect a small amount into the bottom of a shot glass or other small glass. Then locate the red bottle of pH testing drops and drop in three drops into the glass. The water should turn purple, indicating a 10+ pH.

Next, set the REVELATION to the number four acid level. Collect the water. Put in three drops. The color should be orange to red, indicating a 2 to 4 pH.



Tip: To make even stronger acid water, push the turbo button on the REVELATION and collect the acid water runoff from the secondary drain hose. This will be the strongest acid water the REVELATION can make.

Tip: You can test the other levels of the REVELATION with your testing drops. Compare them to chart above. Note: color and pH results will vary based on the temperature, mineral content, TDS, and hardness of your tap water, so expect some variation in the colors you see. If you notice a big discrepancy, please contact your authorized dealer for information on prefilters.

WARNING: Never drink the water with the pH testing drops in it! If you do, contact a poison control center immediately.

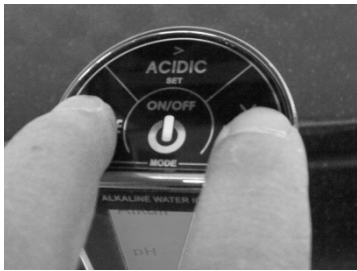
Note: The REVELATION automatically cleans itself. You won't see a cleaning cycle until after a couple months of use, when debris and minerals begin to build on the plates. This cleaning cycle will keep the plates relatively clean for a few months. We recommend that you clean your REVELATION every nine months to one year with the REVELATION cleaning cartridge..

Programming the REVELATION

Programming your product is not necessary since your REVELATION is already set for optimal performance.

You may want to program: (1) the voice volume/muting. (2) stronger level of ionization to compensate for hard water or water deficient in minerals (Engineer Mode).

You can exit programming at any time by touching the SET button .



To Enter into the Mode:

Simultaneously touch the **ALKALINE** and **PURE** sensors for five seconds.

1. Volume Control Option

This allows you to (1) set the voice volume or (2) turn off the voice. Use the **“ALKALINE(Λ)”** sensor to increase the voice volume. Use the **“PURE(v)”** sensor to decrease the voice volume. To turn the voice off, continue touching the **“PURE(v)”** sensor. If you have turned off the voice and want to turn to back on again, touch the **“ALKALINE(Λ)”** sensor and then adjust the volume level by using the **“Λ”** and **“v”** buttons.



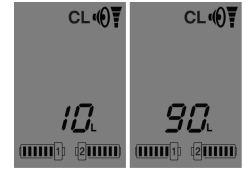
2. LCD Backlight Option

Touch the **“ACIDIC(>)”** sensor ONCE. **“OFF”** flashes on the display. Switching this option to **“ON”** will keep the backlight on your REVELATION screen constantly lit. We recommend that you keep this option on **“OFF”** so that the screen only lights up when you touch a sensor.



3. Automatic Cleaning Option

Touch the **“ACIDIC(>)”** sensor ONCE. **“CL”** flashes on the display. This sets how often the automatic cleaning operates. Leave as programmed.



4. Filter #1 Life Reset Option

Touch the **“ACIDIC(>)”** sensor ONCE.

“Filter #1 icon” flashes on the display. Switching this option to **“ON”** will reset filters #1 and #2.



5. Filter #2 Life Reset Option

Touch the **“ACIDIC(>)”** sensor ONCE.

“Filter #2 icon” flashes on the display. Switching this option to **“ON”** will reset filters #3 and #4.



You are done! Continue touching the **“ACIDIC(SET)”** button to exit programming.

Note: When you make any adjustment to an option in the mode you must hit **“ACIDIC(SET)”** to save the changes you made. If you want to change another option in the mode, you must go back into it by pressing the **“ALKALINE”** button and **“PURE”** button for five seconds, then hitting the **“ACIDIC(>)”** button until the option you want to change is displayed. Then, after you make your changes, you must touch SET again.

Tip: If you adjust the overall ionization strength of the REVELATION in step 6, it will change all of your pH and ORP values to their default setting. So, if you want to also fine tune each pH and ORP value for the four alkaline settings, you must enter the “mode” again, adjust these values, then hit “set” to save your changes. You cannot adjust multiple options at the same time. You must reenter the “mode” each time.

Programming the REVELATION: Engineer Mode

Programming your product is not necessary since your REVELATION is already set for optimal performance. However, if you have tested your water using the provided pH test drops and the ionization is either too strong or too weak on a particular setting, the Engineer Mode can increase or decrease ionization for that level.

To enter Engineer Mode: Touch the “**ACIDIC**” and “**PURE**” sensors simultaneously for five seconds.

1. Program Version Display:

This displays the REVELATION program version. Skip this step by touching the “**ACIDIC(>)**” sensor once.

2. Ionization Strength Option:

pH and Pure will flash on the screen. This is used to set the initial ionization strength of the REVELATION. The weakest setting, for water rich in minerals and not hard, is 8.0. The strongest setting, recommended for hard water and water lacking in minerals is 6.5. Adjusting this value affects all the pH and ORP levels of the REVELATION. You can fine tune each individual setting by following steps 3, 4, 5, and 6.

We set each REVELATION to 7.0. This is the best setting for most water in the US. However, if your water is hard, lacking in minerals, or pristine water like in Hawaii which tends to over-ionize, you may want to make an adjustment here higher or lower. Use your pH testing drops to determine how well the REVELATION is performing with your tap water. If the ionization is too strong (ie: a purple result when it should be blue), turn up this setting from 7.0 to 7.5 or 8.0. If the ionization is too weak (ie: a blue result when it should be purple), turn down this setting from 7.0 to 6.5.

Press “**ACIDIC(SET)**” to save changes.

Touch the “**ACIDIC(>)**” sensor once to go to the next function.

3. Alkaline Water Level #1 Adjustment:

“**Alkali**” and “**pH**” will blink on the screen. This option allows you to increase or decrease the ionization strength of preset alkaline water level #1. There are 19 levels of ionization. You will see a number between 1 and 18. 1 is the weakest and 18 is the strongest for this level. If you want more ionization, program the number to 18. If you want less ionization, program a number closer to 1. Press “**ACIDIC(SET)**” to save changes.

Touching the “**ACIDIC(>)**” sensor once to go to the next level.

4. Alkaline Water Level # 2 Adjustment:

Alkali and pH will blink on the screen. It's the same instructions as programming alkaline water level #1 except the numbers displayed will be between 19 and 38. 19 is the weakest for this level and 38 is the strongest.

Touching the “**ACIDIC(>)**” sensor once to go to the next level.

5. Alkaline Water Level #3 Adjustment:

Same instructions as the other two levels except the numbers are now between 39 and 57. 39 is the weakest and 57 is the strongest.

Touch the “**ACIDIC(>)**” sensor once to go to the next level.

6. Alkaline Water Level #4 Adjustment:

Same instructions as the other three levels except the numbers are now between 58 and 76. 58 is the weakest and 76 is the strongest.

Touch the “**ACIDIC(>)**” sensor once to go to the next function.

7. Ampere Calibration:

Ampere Calibration is to be performed only by the manufacturer. Do not make adjustments.

Press “**ACIDIC(SET)**” to exit the Engineer Mode.

Changing the REVELATION's Filters

When to Change the REVELATION's Filters:


The LCD screen displays the amount of liters filtered counting down from 3,000 liters on filters #1 and #2, and from 6,000 liters on filters #3 and #4. When the counter reaches 70 liters on either set of filters, it will tell you it's time to change those filters.

Note: If you do not change the filter set before the counter reaches 0, the REVELATION will stop functioning until you change it.

WARNING: If your water ever smells bad or the flow rate is severely reduced, you will need to change the filters even though the display shows remaining filter life. This will happen in the case of overly contaminated or hard source water. If your supply water is really bad, you'll need to install prefilters. Please contact your dealer if you have questions.

How to Change the REVELATION Filters:



1. First, turn off the water being supplied to REVELATION using the water flow control handle on the cold water line diverter valve. Turn it to the right. 
2. Use a penny to prop open the front cover of the REVELATION base.




3. Use a flat head screw driver to push the ring of the adapter up and at the same time pull the filter down.


CAUTION: There will be a small amount of water left in the lines, so have a towel handy.

4. Please pay special attention to the IN and OUT labeled on the new filters. Be sure that the IN and OUT line up correctly with the adapters.

5. After installing the new filters, you must reset the filter life. Please read the filter life reset section in the "Programming the REVELATION" instructions on page 25.



① SEDIMENT FILTER	
② PRE CARBON FILTER	3,000L

③ CERAMIC FILTER	
④ POST CARBON FILTER	6,000L

Water Problems and Solutions

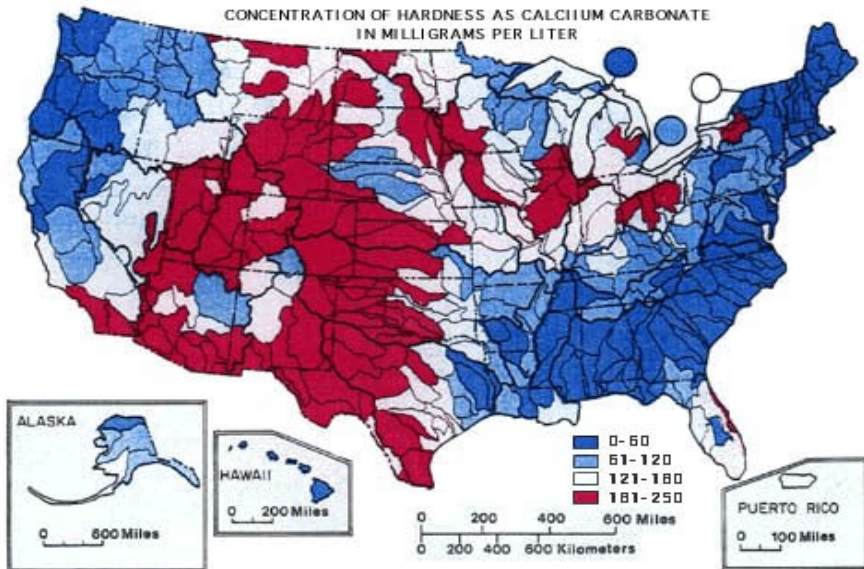


Figure 5.—Mean hardness as calcium carbonate at NASQAN stations during 1975 water year. Map at bottom is colored to show station data representing flow from the accounting unit.

From: http://en.wikipedia.org/wiki/Hard_water#Hard_water_in_the_US

According to the United States Geological Study 89.3% of US homes have hard water. The softest waters occur in parts of the New England, South Atlantic-Gulf, Pacific Northwest, and Hawaii regions. Moderately hard waters are common in many of the rivers of the Tennessee, Great Lakes, Pacific Northwest, and Alaska regions.

Hard and very hard waters are found in some of the streams in most of the regions throughout the country. Hardest waters (greater than 1,000 mg/L) are in streams in Texas, New Mexico, Kansas, Arizona, and southern California.

What type of Water do I have?

Soft Water:

Grains per Gallon = Less than 1.0

Milligrams per Liter (mg/l) or Parts per Million (ppm) = Less than 17.1

Slightly Hard Water:

Grains per Gallon = 1.0 to 3.5

Milligrams per Liter or Parts per Million = 17.1 to 60

Moderately Hard Water:

Grains per Gallon = 3.5 to 7.0

Milligrams per Liter or Parts per Million = 60 to 120

Hard Water:

Grains per Gallon = 7.0 to 10.5

Milligrams per Liter or Parts per Million = 120 to 180

Very Hard Water:

Grains per Gallon = Over 10.5

Milligrams per Liter or Parts per Million = Over 180

Water Problems and Solutions Chart

Water in the US varies greatly. Areas in the southern parts of the US usually have hard water whereas areas in the northern parts sometimes have soft water. While the REVELATION can correct for some variation in the source water, it cannot handle all types of water because some types of water simply can't be ionized well.

You'll know if your REVELATION is achieving the correct pH levels by using the provided pH testing drops (red solution). Push the alkaline water level #4 button and the water "on" button, put a small amount of this water into a small glass. Then add two or three drops of the pH testing drops. You should see a dark purple color.

Water Problems and Solutions Continued:

Getting this purple result tells you that your REVELATION is accurately ionizing the water and no further treatment of your water is necessary.

Dark blue is also acceptable, indicating a 9.0 to 9.5 pH. Any other color requires pretreatment of your water.

Note: The optimal drinking water you should consume is indicated by a dark blue result with the pH drops on the #3 alkaline setting.

Also, if you live in the southern parts of the US, there is an abundance of alkaline minerals in the water, like calcium. So, it is very difficult to achieve a strong acidic pH with a water ionizer alone. To get a stronger acid, you will need to pre-treat your water with a reverse osmosis filter and a remineralizing pre-filter set for your REVELATION. The reverse osmosis filter removes most of the scale from the water, while the remineralizing pre-filter adds soluble minerals necessary for ionization. The following is a chart to give some general recommendations. Please call your dealer for more specific information.

Source Water Problems and Solutions Chart

Please study the chart to the right to determine if you need pre-filters or other types of water treatment to help your REVELATION to produce optimal water.

Note: All pre-filters are available on the Water for Life USA website or through your authorized dealer.

To test your water for hardness and other contaminants, we recommend <http://www.discovertesting.com/>

For more information on hard water, please read: http://en.wikipedia.org/wiki/Hard_water#Hard_water_in_the_US

Also please read: <http://www.ext.vt.edu/pubs/housing/356-490/356-490.html>

Source Water	Comments	Solutions
Acceptable hardness (Approximately 7-12 grains)	Water contains acceptable mineral content. REVELATION will produce nearly accurate pH and ORP water.	No water pre-treatment is required.
“Very Hard” water (Approximately 12-16 grains)	Water contains excessive mineral content that will shorten REVELATION filter life..	Install an Omnipure descaler to reduce hardness.
“Very, Very Hard” water (16 grains and higher)	Water contains excessive mineral content that will shorten REVELATION filter life.	Install RO filter to purify water. Install remineralization filter set into your REVELATION. Or install the “Hard Water Buster.”
“Soft” water (below 7 grains)	Water lacks enough mineral content for REVELATION to produce accurate pH and ORP water.	Install remineralization filters to precondition REVELATION source water.
Soft Water (from salt –based water softener)	Water lacks enough mineral content for REVELATION to produce accurate pH and ORP water.	Install remineralization pre-filter to precondition REVELATION source water.
R/O Water	Water is void of minerals necessary to ionize water.	Install remineralization pre-filter set to add minerals to water for ionization.
High Fluoride Water	Water has high levels of fluoride, usually in cities.	Install fluoride prefilter.
Chloramine in Water/Heavy Metals in Water	Water has heavy metals, like arsenic, or chloramine in water.	Install heavy metal (KDF 85) prefilter.

How to Use Alkaline Water:**8.5 pH (1st level alkaline water)**

Use this level when you first start drinking alkaline water. Drinking this level for one to two weeks before progressing to 9.0 pH is a fairly easy transition for most folks.

This is also a good level for mixing with powdered milk and for those with gastroenteric issues.

9.0 pH (2nd level alkaline water)

After drinking 8.5 pH water for one to two weeks, drink 9.0 pH water for one to two weeks before increasing to 9.5 pH (alkaline water level three).

9.5 pH (3rd level alkaline water)

This is the level most adults choose to drink.

This is also a good level for making tea and coffee; it enhances natural flavors and shortens steeping time.

If you drink alcohol, this level of water is good to help with hangovers. Drink two cups prior to drinking alcohol and two more prior to going to bed.

10.0 + pH (4th level alkaline water and the Turbo level)

High alkalinity water has a detergent-like effect and is able to dissolve and draw out oil-based substances (pesticides are often oil-based and not removed with standard water). 10 pH high alkalinity water more effectively emulsifies oil, cleans oily or greasy items, strips oil-based pesticides off produce, and infuses vegetables with negative ions that retard their degeneration.

Some specific uses include:

Cleaning cutting boards, knives and dishes.

Sterilizing (by soaking) vegetables, meat, poultry, pork and fish. Also helps to bring out natural flavors and reduce acid.

Great for making soups. Infuse vegetables with a high supply of antioxidants.

First rinse rice in pH 8.5 alkaline water and then cook that rice in pH 11.0 water to quicken cooking time reduce damage to the rice and maintain its natural flavor.

6.0 pH (1st level acidic water)

Good for gargling and brushing your teeth.

Use this level water when making the batter for fried foods to make them crunchier.

Also good for boiling pasta and noodles.

Has excellent cleaning and astringent qualities – tightens pores like a toner. Spray on your face and neck, tightens the skin and kills bacteria, clears up acne and reduces the appearance of age spots!

Ideal for bathing adults with sensitive skin and infants.

5.0 pH (2nd level acidic water)

Beauty Water: Use this acid level when you take a bath or wash your face. Also good for washing an infant.

Restores shine to hair / lends silky softness to skin.

Relieves sunburn.

Relieves skin problems such as psoriasis, rashes, eczema and dryness.

4.0 pH (3rd level acidic water)

Good for removing sediment/stains from coffee pots and teapots or cups.

Use this acid level in your humidifier.

pH 3.0 (4th level acidic water and the Turbo level)

Strong acidic water has excellent disinfecting power that can prevent food poisoning.

This water kills viruses such as staph, strep, Candida, athlete's foot, fungus, e- coli, salmonella and a host of pathogens in as little as 30 seconds.

Common Uses Include:

* Disinfect knives, cutting boards and counter tops (soak for 20-30 minutes).

* Sanitize dish rags and sponges (soak for 20-30 minutes).

* Sanitize your toothbrush (soak for 20-30 minutes).

* Soak burns, eczema, psoriasis or other skin sores.

* Clean cuts, bruises and scrapes.

* Soak vegetables and fruits to remove impurities.

Filtered Only Water (Pure) Use this level when taking medication. The pH level of filtered only water is the pH level of your tap water.

How to Drink Alkaline Water from the REVELATION:

When an adult starts drinking alkaline water, he or she should always start off drinking the 8.5 pH, 1st step alkaline water. Start by drinking two to three glasses a day for one week then drink three to four glasses a day of the 2nd level alkaline water (9.0 pH) for the second week. Typically most adults stay on the number two alkaline water level for a while. But everyone is different. Some drink the number three level (9.5 pH). This is just advice and should not replace the instructions of a doctor.

Do not drink the number four alkaline water level (11.0 pH). Only use it for cooking.

Use filtered only water (***Purified***) when taking medications, not ionized water, as some medications may interact with ionized water.

When you first start drinking alkaline water, it's advisable for you to consult a doctor.

If you experience discomfort or problems beyond normal detoxification symptoms, you should stop drinking alkaline water and consult a doctor.

If you have kidney problems such as renal failure or a potassium evacuation disorder, you should not drink alkaline water.

You should check the pH level of the REVELATION by using the provided pH testing drops once a month.

It's best to drink alkaline water as soon as it's made but if you want to preserve it:

Put it in an ***airtight glass*** or ***polycarbonate bottle (never plastic)***. Store in the refrigerator.

The water will maintain its alkalinity for approximately three days.

If the container is not *airtight*, the water will return to a neutral pH in about twelve hours.

If you have Achlorhydria, please consult a doctor before drinking alkaline water.

Normal detoxification symptoms include minor diarrhea, bloated feeling, body aching, increased body odor and pimples. If the symptoms are too much, decrease the pH level or the amount of alkaline water consumed. If symptoms don't improve, consult a doctor.

Do not drink acidic water.

REVELATION Troubleshooting:

One of the most common questions we get is: "*How come my REVELATION never cleans itself?*"

Actually, it does, but in a much more sophisticated way than customers are used to. Most water ionizers run cleaning cycles once or twice a day based on an internal timer. The REVELATION actually senses the contamination of the plates and won't run a cleaning cycle until it is needed.

That is why many customers don't see a cleaning cycle until a couple months into ownership.

It is also a good idea to clean your REVELATION plates with our internal cleaning filter at least once a year, available at www.waterforlifeusa.com

See the chart on the next page for answers to other common troubleshooting questions.

Problem	Causes	Solution
My water tastes funny.	Filter is at the end of its life. Or, there's something in your tap water that requires additional filtration (like sulphur).	Change the filter. If taste persists, get a water test done.
Water isn't coming out of my REVELATION or the water flow is weak.	The supply hose may be bent. The water diverter valve may need to be opened more. The water "on" button may need to be pressed, or water pressure is too weak.	Check all hoses. Check your water diverter valve to make sure flow is strong. Make sure you have pressed the "on" button. Check your home water pressure.
I've tested the pH of the REVELATION water and it doesn't test right.	Tap water mineral content is too low or water is hard. Water flow through REVELATION is too high. "Mode" settings may be too low for your water.	Check to see if your tap water has a good supply of minerals, flow rate is between 2 and 2.5 liters per minute, and adjust your mode settings higher or lower accordingly.
My REVELATION shuts down while I'm still using it.	The REVELATION is overheating. The REVELATION has been running for more than five minutes continuously. The water pressure on the REVELATION may be too strong.	Let the REVELATION rest for a few minutes. Check to make sure your water flow rate is between 2 and 2.5 liters per minute.
There is a water leak from my REVELATION.	One of the filters is improperly seated or the "O" ring is missing. There is something wrong with the REVELATION internally.	Check both the #1 and #2 filter for proper installation. If the leak is coming from under the unit near the electrical, unplug immediately and call your dealer.
There is a white substance left over on the bottom of my glass!	It's just minerals from your tap water because water ionization reduces water and concentrates the minerals.	Drink it! The minerals aren't harmful. Clean the glass with soap.
My REVELATION will only dispense "pure" water.	The water flow rate may be greater than 3.5 liters per minute or less than 1 liter per minute.	Adjust the water flow to between 2 and 2.5 liters per minute

List of REVELATION Auto-Diagnosis Errors:

Your REVELATION constantly monitors itself for problems. Here is a list of error messages you may see and what to do about them.

Er.0 The water flow from your supply hose is less than 1 liter per minute and the REVELATION does not have enough water flow to ionize water. Please increase the water flow to between 2.0 and 2.5 liters per minute (as displayed on the LCD screen). Don't *exceed 3.5 liters per minute*. If you do, you will see the same message. In this case, turn the water flow down. The only other possible reason for the Er.0 message is too much water pressure in your supply water. This is why we have included the white, square water pressure reducer. If you have adjusted your water flow to between 2 and 2.5 liters per minute and you are still seeing Er.0, please install the white water pressure reducer between your faucet or cold water line and the REVELATION. Just cut the line and insert the cut ends into the water pressure reducer.

NOTE: If you install the white water pressure reducer and your supply water doesn't need it, this will cause the Er.0 message. In this case, just remove the white water pressure reducer. Only customers in big cities typically need to install this white water pressure reducer.

Er.1 Communication error. There is a problem with the communication cable. Check to make sure it is connected properly between the faucet and the base.

Er.2 The REVELATION has been running for too long and needs to cool down or there is a problem with the supply water quality (minerals are deficient or the source water is too hard). If you ordered from a Water for Life USA dealer, contact them to help with this issue.

Er.3 Filter Set #1 Life error.

Er.4 Filter Set #2 Life error.

Item		Specifications
Model Name		REVELATION
Rated Power Supply		AC 100V-120V or AC 220V-240V / 50-60Hz
Water Supply Method		Direct connection to tap water
Body	Dimension	15 x 11 x 6 inches
	Weight	14 pounds
Allowable water pressure		1.5~5.0 kgf/cm ²
Allowable Temperature		5~40°C
Electrolysis Device	Electrolysis Method	Continuous Electrolysis
	Generating Capacity	1.1 ~3.5l/min
	Electrolysis Step	Alkaline water : 4 step / Acid water : 4 step
	Electrolysis cleaning	Automatic cleaning (cleaning time: approx. 30 seconds)
	Electrode	9 Plates Platinum/Titanium
Filter	Filter replacement	Cartridge type (pair type)
	Filter lifetime	Filter #1(①,②) : 3,000L / Filter #2(③,④) : 6,000L
	Lifetime indication	Letter indication on LCD
	Filter materials	Sediment filter, granular activated carbon, Alkaline Water Ionizer Sediment filter, granular activated carbon, Ceramic

Product Warranty

The REVELATION warranty is five years parts, labor, and shipping.

If there are any problems with the REVELATION, contact your dealer.

Your dealer will repair or replace your REVELATION in the case of malfunction.

The customer will pay for repair costs and shipping if the malfunction of the REVELATION is caused by any of the following:

- a) Improper use or carelessness
- b) Repairs or modifications made by an unauthorized agent.
- c) Natural disasters such as fire, hurricane, tornado, or natural elements such as excessively salty air, too much heat, too much humidity, or exposure to direct sunlight.

The customer will pay for repairs and shipping if the malfunction occurs beyond the warranty period.

MODEL NAME			
SERIAL NO.			
DATE			
ADDRESS			
NAME		TEL	
Agent you purchased from:			